

| | | |
|---|---------------------------------|---------------------------------|
|  <i>Better Solutions Are Within Reach®</i> | MODEL NUMBER: PDI-MCP | Document Number: PD196-397R3 |
| | medTV® Mobile Cart Assembly | Page 1 of 11 |

Graphical Symbols

This lightning flash with arrowhead symbol, within an equilateral triangle, is intended to alert the user of the presence of uninsulated “dangerous voltage” within the product’s enclosure that may be of sufficient magnitude to constitute a risk of electric shock to persons.

The exclamation point within an equilateral triangle is intended to alert the user of the presence of important operating and maintenance (servicing) instructions in the literature accompanying the appliance.



Important Safety Instructions

PLEASE READ AND KEEP THESE INSTRUCTIONS. OBSERVE ALL WARNINGS AND FOLLOW ALL INSTRUCTIONS CONTAINED IN THESE SAFETY INSTRUCTIONS AND THOSE ON YOUR APPARATUS. RETAIN THESE INSTRUCTIONS FOR FUTURE USE.

Electrical energy can perform many useful functions. This unit has been engineered and manufactured to assure your personal safety. However, improper use can result in potential electrical shock or fire hazards. In order not to defeat the safe-guards incorporated on this apparatus, observe the following basic rules for its installation, use and servicing. Your apparatus is fully transistorized and does not contain any user serviceable components. Removal of the cabinet cover may expose you to dangerous voltages. Refer all servicing to qualified service personnel.

1. Read these instructions.
2. Keep these instructions.
3. Heed all warnings.
4. Follow all instructions.
5. Do not use this apparatus near water.
6. Clean only with dry cloth.
7. Do not block any ventilation openings. Install in accordance with the manufacturer’s instructions.
8. Do not install/operate near any heat source such as radiators, heat registers, stove, or other apparatus (including amplifiers) that produce heat.

| | | |
|---|------------------------------|---------------------------------|
|  <i>Better Solutions Are Within Reach®</i> | MODEL NUMBER: PDI-MCP | Document Number: PD196-397R3 |
| | medTV® Mobile Cart Assembly | Page 2 of 11 |

9. Only use attachments/accessories specified by the manufacturer.

10. Use only with the cart, stand, tripod, bracket or table specified by the manufacturer, or sold with the apparatus. When a cart is used, use caution when moving the cart/apparatus combination to avoid injury from tip-over.



11. Unplug this apparatus during lightning storms or when unused for long periods of time.

12. Refer all servicing to qualified service personnel. Servicing is required when the apparatus has been damaged in any way, such as power-supply cord or plug is damaged, liquid has been spilled or objects have fallen into the apparatus, the apparatus has been exposed to rain or moisture, does not operate normally, or has been dropped.



WARNING – To reduce the risk of fire or electric shock, do not expose this apparatus to rain or moisture.

WARNING – OXYGEN ENVIRONMENT: Do not use in any oxygen tent or oxygen chamber. Such use may cause a fire hazard.

Apparatus shall not be exposed to dripping or splashing and no objects filled with liquids, such as vases, shall be placed on the apparatus

CLEANING – Clean the exterior of this apparatus by removing dust with a lint-free cloth. For further cleaning, use a soft cloth or paper towel dampened with water.

DISINFECTING – Do not immerse this apparatus, rather clean with a soft damp cloth. To avoid damage to the surface of the apparatus, test a small portion of the apparatus's cabinet with any new disinfectant to verify that the disinfectant will not discolor or soften the enclosure.

| | | |
|---|---------------------------------|---------------------------------|
|  <i>Better Solutions Are Within Reach®</i> | MODEL NUMBER: PDI-MCP | Document Number: PD196-397R3 |
| | medTV® Mobile Cart Assembly | Page 3 of 11 |

medTV® Mobile Cart Assembly

Required Tools not provided: Phillips Screwdriver, 2 adjustable wrenches

Handle / Cord Wrap:

1. Remove the Column Plate by sliding it out the top of the Column and place Column on workbench with open side down, as shown in Figure 1.

Figure 1.



2. Remove the two (2) screws approximately 8.5" from the top end of the Column. Do not discard. Use the screws to attach the Handle, as shown in Figure 2.

Figure 2.



3. Remove the two (2) screws near the bottom end of the Column, in the left slot. Do not discard. Use the screws to attach the Cord Wrap, as shown in Figure 3.

| | | |
|---|-----------------------------|------------------|
| PDi <small>Communication Systems, Inc.</small> <i>Better Solutions Are Within Reach®</i> | MODEL NUMBER: | Document Number: |
| | PDI-MCP | PD196-397R3 |
| | medTV® Mobile Cart Assembly | Page 4 of 11 |

Figure 3.



| | | |
|---|---------------------------------|---------------------------------|
|  <small>Communication Systems, Inc.</small> <i>Better Solutions Are Within Reach®</i> | MODEL NUMBER: PDI-MCP | Document Number: PD196-397R3 |
| | medTV® Mobile Cart Assembly | Page 5 of 11 |

Column Assembly:

1. Place base on workbench so that it is upright and resting on its casters. Set the brakes on the rear casters so the base will not roll.
2. Place column on workbench as shown in Figure 4.

Figure 4.



3. Unwind ethernet and coax cables in the base and feed the cables through the column as shown in Figure 5.

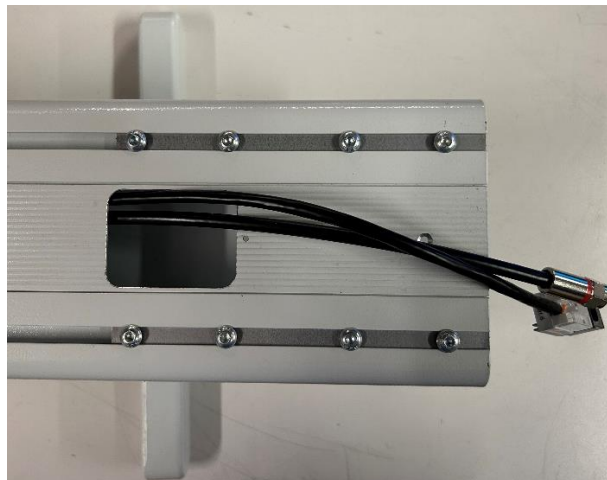
Figure 5.



4. Re-Insert the Column Plate and feed the ethernet and coax cables thru the rectangular opening in the Column Plate, as shown in Figure 6.

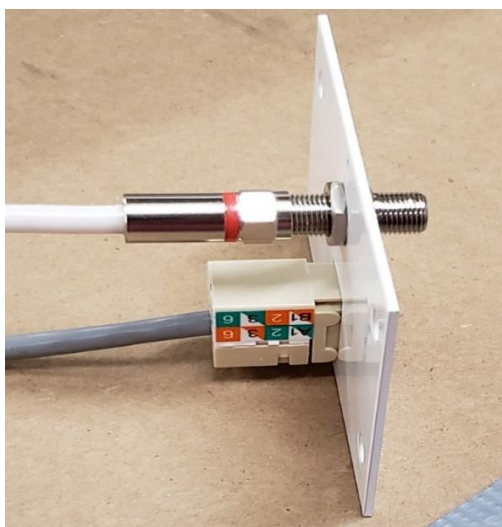
| | | | |
|---|-----------------------------|----------------|---------------------------------|
|  <i>Better Solutions Are Within Reach®</i> | MODEL NUMBER: | PDI-MCP | Document Number: PD196-397R3 |
| | medTV® Mobile Cart Assembly | | Page 6 of 11 |

Figure 6.



5. Using a Phillips screwdriver, remove the screw in the Column Plate, above the rectangular opening. Set this aside as you will need it later.
6. Open the package for the TV that will mount on the Mobile Cart, and, with the adjustable wrenches, remove the F Barrel Connector from the external coax cable exiting the rear of the TV.
7. Connect cables to the Connector Plate as shown in Figure 7.

Figure 7.



8. Remove the four (4) screws from the Column on either side of the rectangular opening with the enclosed 4mm hex wrench. Do not Discard.
9. Position the Connector Plate and re-insert the screws that were removed in Step 7 to attach the Connector Plate to the Column. Do not tighten completely. Re-insert the screw that was removed in Step 5. Finish tightening the 4 screws (DO NOT OVERTIGHTEN!). See Figure 8.

| | | | |
|---|-----------------------------|----------------|---------------------------------|
|  <i>Better Solutions Are Within Reach®</i> | MODEL NUMBER: | PDI-MCP | Document Number: PD196-397R3 |
| | medTV® Mobile Cart Assembly | | Page 7 of 11 |

Figure 8.




10. Remove the four (4) M8x30 socket head cap screws from the bottom of the base, using the enclosed 6mm hex wrench.
11. Turn the Base so it is vertical. Keeping the Column horizontal, insert it into the pocket in the Base, as shown in Figure 9.

Note: It will be easier if the base rest on the rear casters with the brakes set. The base will be less likely to move, and the pocket is lower so the Column will fit into the pocket easier.

Note: Take care to ensure cables do not get pinched by the Column.

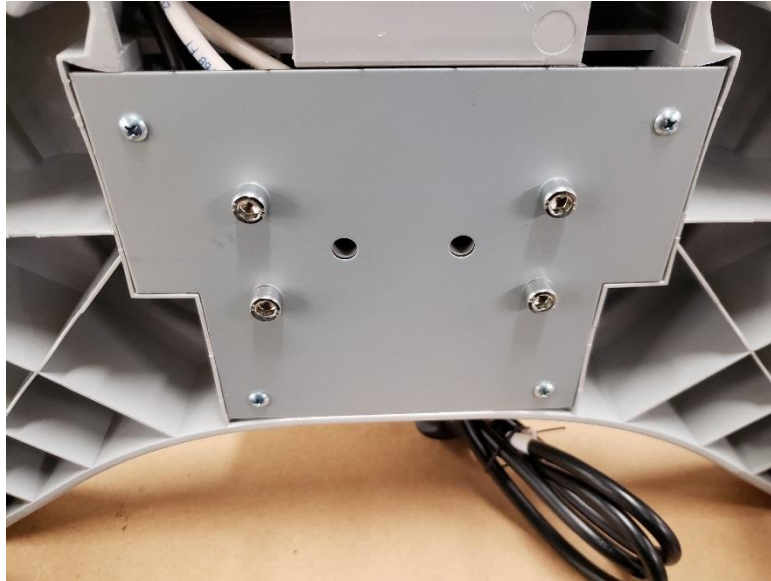
Figure 9.



| | | |
|---|---------------------------------|---------------------------------|
|  <i>Better Solutions Are Within Reach®</i> | MODEL NUMBER: PDI-MCP | Document Number: PD196-397R3 |
| | medTV® Mobile Cart Assembly | Page 8 of 11 |

12. Insert the M8x30 Screws through the holes in the bottom of the base. Use the 6mm hex wrench to tighten completely. See Figure 10.

Figure 10.



13. Set the column upright on floor to install the Arm/TV Assembly.
14. Slide the Column Trim piece down the column so it is flush with the base, if it is not already. Using a Phillips screwdriver, install the self-threading screws included in the hardware bag to affix the Column Trim to the Base. See Figure 11.

Figure 11.



| | | | |
|---|---------------|-----------------------------|---------------------------------|
|  PDi Communication Systems, Inc. <i>Better Solutions Are Within Reach®</i> | MODEL NUMBER: | PDI-MCP | Document Number: PD196-397R3 |
| | | medTV® Mobile Cart Assembly | Page 9 of 11 |

ARM/TV ASSEMBLY:

1. If not already done, place the TV (sold separately) on workbench face down. If necessary, place protective mat on workbench to ensure the viewing surface is not damaged.
2. Using a Phillips screwdriver, mount TV to Arm with spacers and screws found in the hardware bag, as shown in Figures 12 and 13.

Figure 12.




Note: Ensure the cables from the TV are positioned to be on the underside of the Arm, as shown in Figure 13.

Figure 13.



3. Remove the four (4) M8x20 button head cap screws from the top of the Column, with the 5mm hex wrench provided. Also, remove the four (4) M6x10 button head cap

| | | | |
|---|-----------------------------|----------------|---------------------------------|
|  <i>Better Solutions Are Within Reach®</i> | MODEL NUMBER: | PDI-MCP | Document Number: PD196-397R3 |
| | medTV® Mobile Cart Assembly | | Page 10 of 11 |

screws near the top of the Column, above the Connector Plate, as shown in Figure 14, with the 4mm hex wrench, and set aside. You will need these later.

Figure 14.



4. Place Arm Assembly on top of Column so the Arm is toward the Front of the Cart. Re-insert the M8x20 screws as shown in Figure 15, with the 5mm hex wrench.

Figure 15.

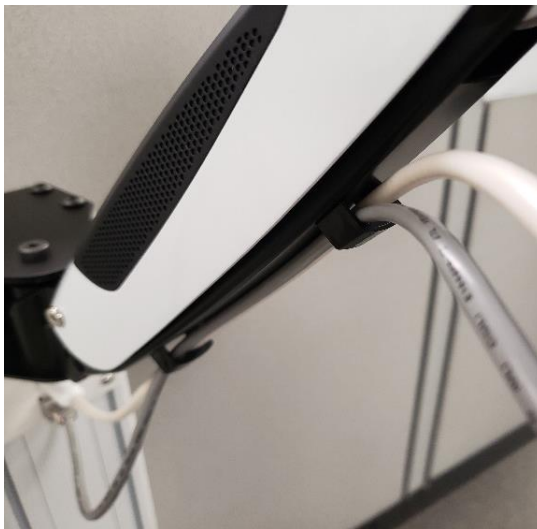


Note: It will make the task easier if all four screws are started into the threaded holes and then tightening one of them until the Arm supports itself on the Column.

| | | | |
|---|-----------------------------|----------------|---------------------------------|
| PDi <small>Communication Systems, Inc.</small> <i>Better Solutions Are Within Reach®</i> | MODEL NUMBER: | PDI-MCP | Document Number: PD196-397R3 |
| | medTV® Mobile Cart Assembly | | Page 11 of 11 |

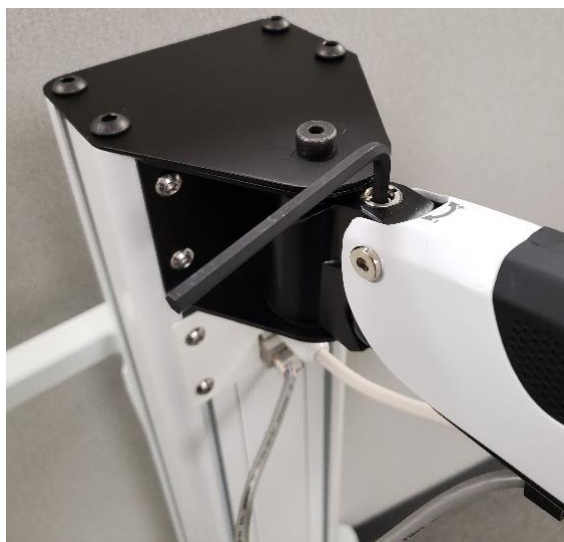
5. Before fully tightening the M8x20 screws on the top of the column, re-install the M6x10 screws (removed in Step #3) on the face of the column, using the 4mm hex wrench.
6. Connect the coax and ethernet cables from the TV to the Connector Plate on the front of the Column and use the cable guides from the hardware bag to maintain the cable(s), as shown in Figure 16.

Figure 16.



7. Using the included 5mm Hex Wrench, adjust the piston resistance at the screw located near the bottom pivot of the arm. This will ensure that the Arm and TV maintain their desired elevation. See Figure 17.

Figure 17.



For further support, please contact PDi ProServices at 800.628.9870, Ext. 505.