

I'M MIKE!

I am your PDi tech-guru to help you understand how patient TVs work with DISH NETWORK.

SATISFY PATIENTS WITH DISH NETWORK™

HERE'S HOW IT WORKS

1. TV signal into building from satellite dish
2. Add in other TV inputs (DVD, rooftop antenna)
3. Assign each input to TV channel (modulator)
4. Add TV power over coax cable
5. Deliver TV signal to each patient TV
6. Patient enjoys DISH NETWORK!

1 SATELLITE SIGNAL

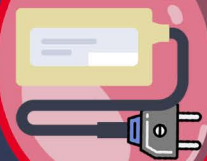


2

HEAD-END EQUIPMENT CLOSET



3 MODULATOR



4

TEN-TAP TV POWER SUPPLY



5

SIGNAL GOES TO EACH TV

6

PATIENT CONTROLS TV WITHOUT NEEDING A REMOTE!

SPECIAL EQUIPMENT BY PDI, CALLED A SATELLITE INTERFACE OR PD295-002 MINIMOD, IS SET UP IN THE CLOSET TO MAKE IT EASY FOR PATIENTS TO USE DISH NETWORK