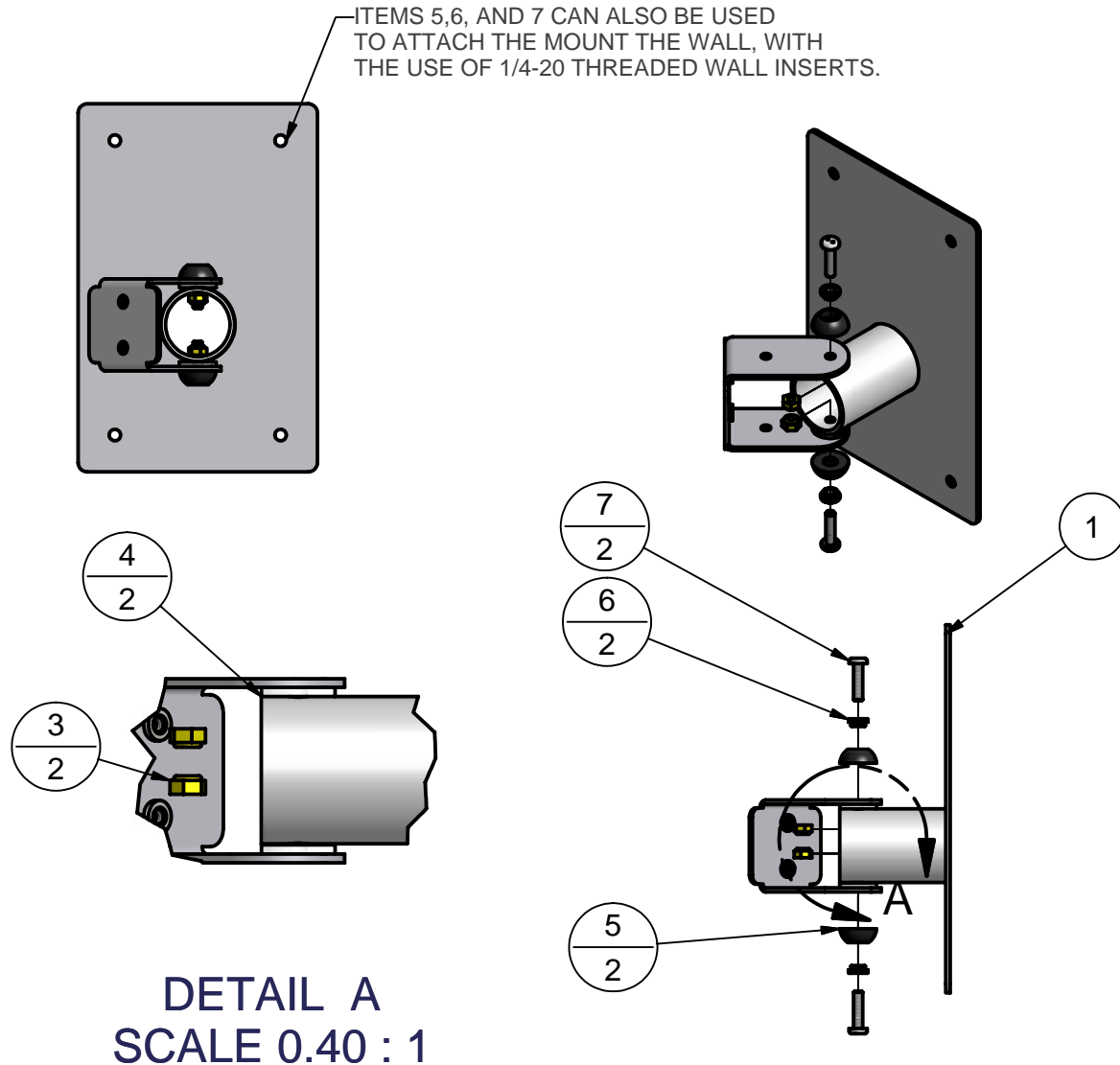


THIS HARDWARE KIT IS USED TO REPLACE THE STANDARD ASSEMBLY FASTENERS INCLUDED WITH THE LCD PAN & TILT MOUNTS. THE KIT IS SHOWN BEING INSTALLED AT THE PIVOT POINT OF THE MOUNT. ITEMS 5,6, AND 7 CAN ALSO BE USED TO ATTACH THE MOUNT THE WALL, WITH THE USE OF 1/4-20 THREADED WALL INSERTS.



Parts List			
ITEM	QTY	PART NUMBER	DESCRIPTION
1	1	PD181-606	LCD PAN & TILT MOUNT (INCLUDES CLEVIS)
3	2	2520 NYLOC	1/4-20 NYLOC NUT
4	2	PD11172	FRICION WASHER
5	2	PD220-105	SECURITY WASHER
6	2	PD183-001	BELLVILLE BUSHING
7	2	2520 X 100 SNAKE-EYE	1/4-20 X 1" SNAKE-EYE SCREW