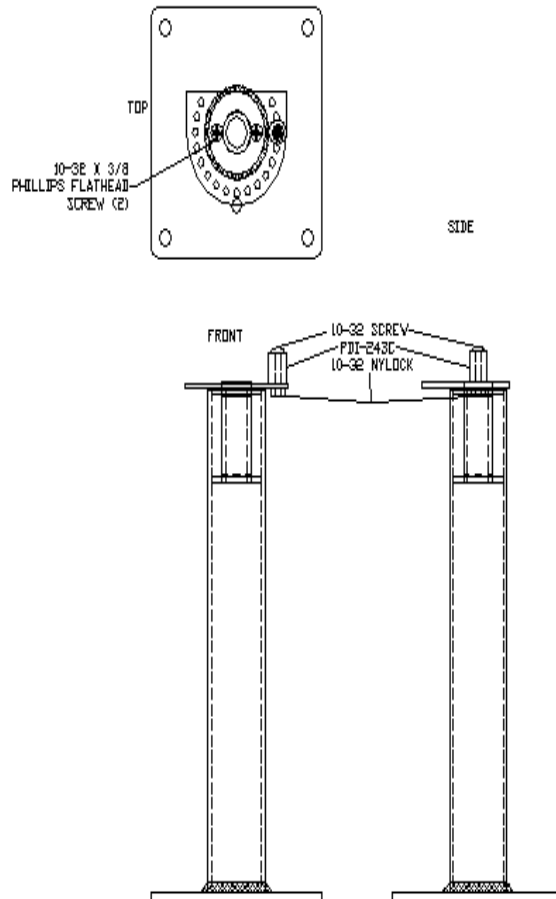


Place the PDI-242STM rotational stop plate on the table mount, so the large hole in the stop is around the top of the bushing and the round edge is above the coax hole. (This edge should be facing outward on the installation.) Fasten the stop plate to the table mount with (2) 10-32 x 3/8 phillips flathead screws. The screws should be flush when installed. Next, place the arm into the table mount. Place a 10-32 x 1-1/4 screw thru the PDI-243, plastic stop. Rotate the arm to the left or right until the desired position is reached. Place the screw/stop thru the closest hole in the PDI-242STM and next to the arm base that will not allow the arm to rotate beyond the desired position. Now, place a 10-32 Nylon insert locknut on the screw and tighten until the stop is secure. Repeat on the opposite side if there are dual stops.



EXAMPLE OF MOUNTING WITHOUT ARM INSTALLED